

# Towards an Economic Assessment for the Wakefield District

Roger Kojan, Regeneration and Economic Development  
Policy Manager, Wakefield Council

# Economic Geography

- Links to Leeds City Region as a whole
- Strong links with Leeds City, 14% of Wakefield residents work in Leeds
- Links between urban and rural economies
- Sub district economic areas, Wakefield, Five Towns, SE Rural Coalfield
- Green Corridor with Doncaster and Barnsley
- Neighbourhood profiles and SWOT analyses





# Key Diagram

Key to Symbols

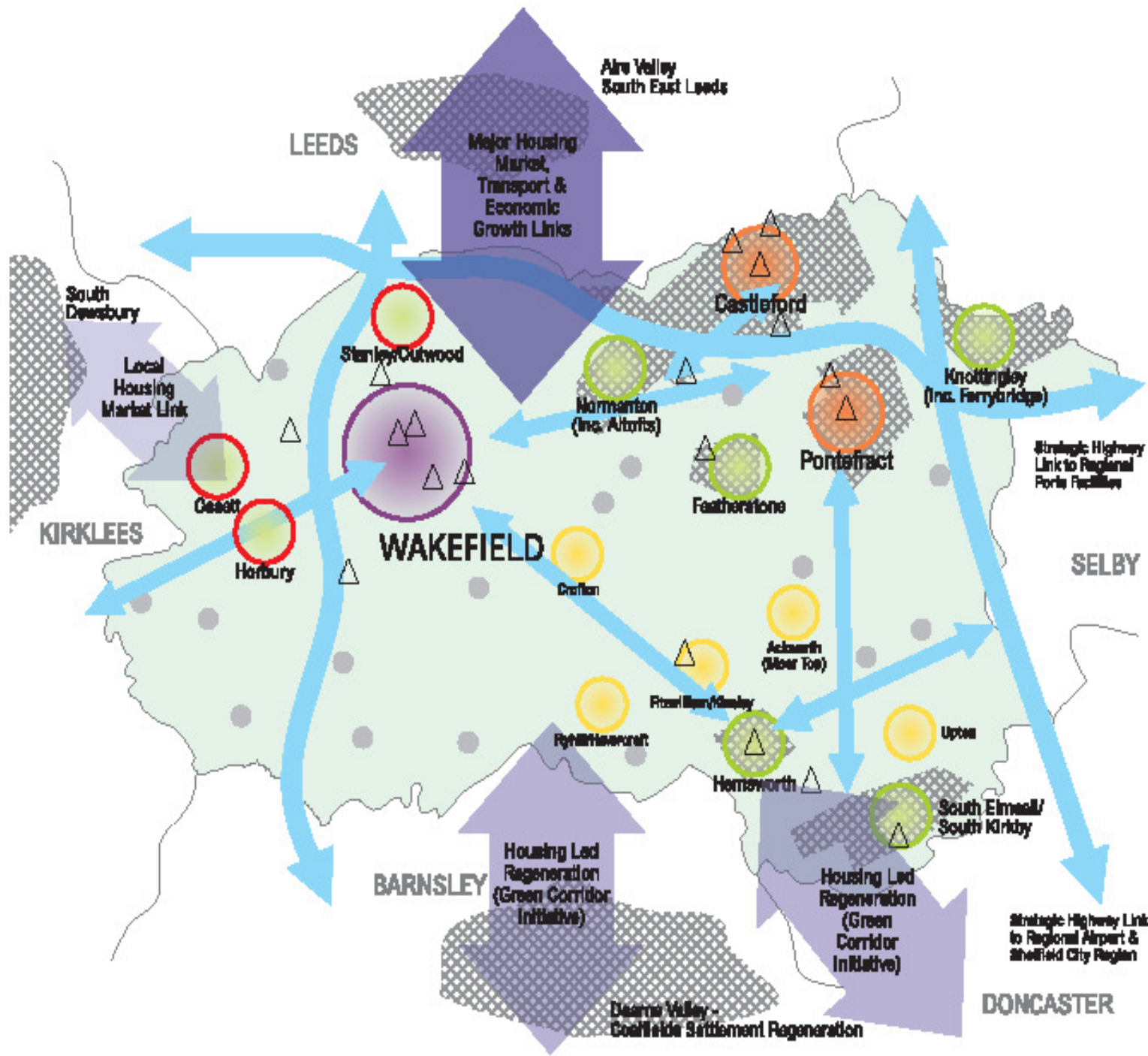
## Spatial Development Strategy (Scale of Growth)

- Sub-Regional City & Focus for Long-term Growth
- Principal Town & Focus for Long-term Growth
- Other Urban Areas
- Other Urban Areas of Restraint
- Local Service Centres
- Villages

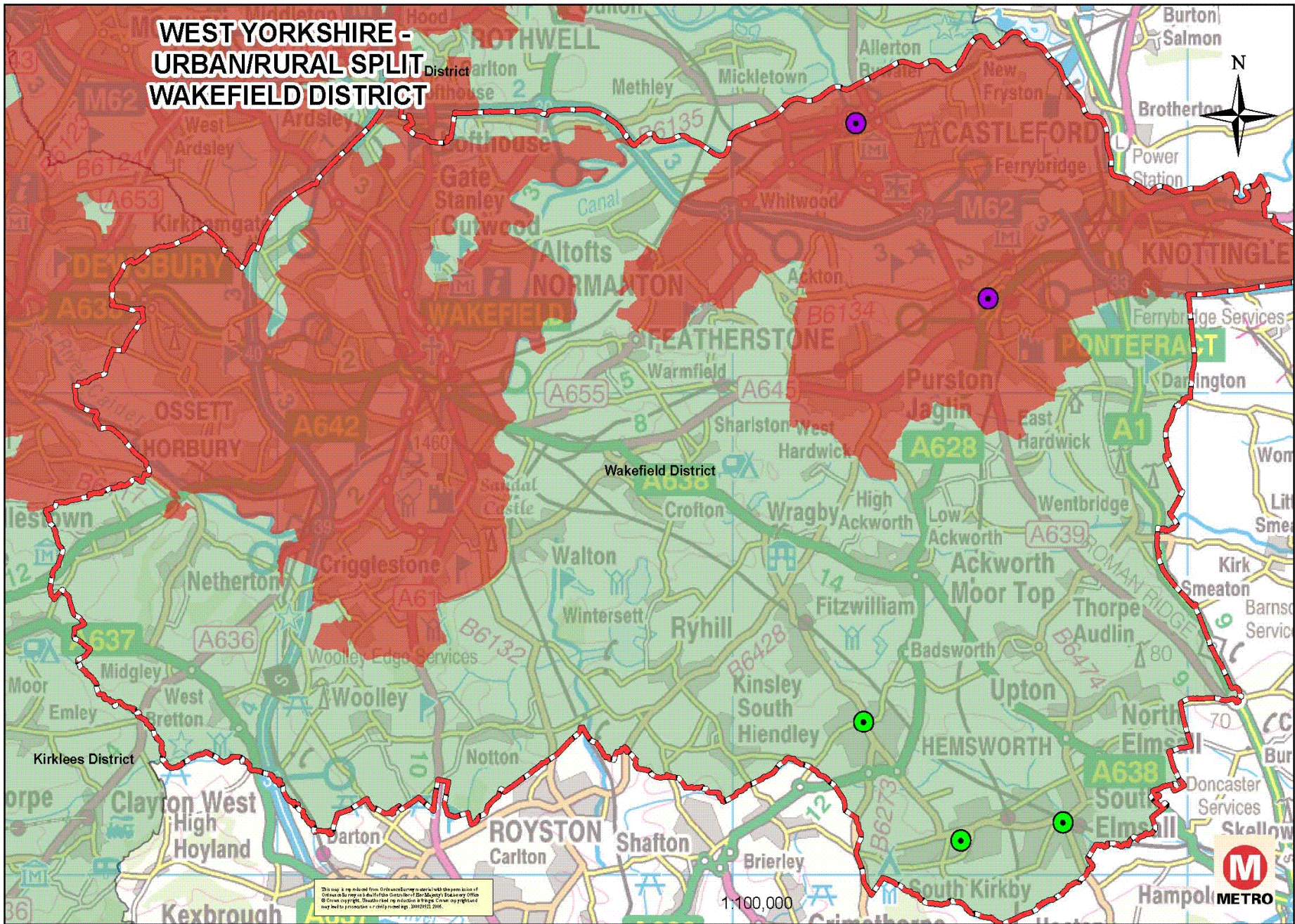
- Regeneration/Investment Area of Regional Significance
- Key Development Sites
- Strategic Transport Lines
- Influences from external towns and cities
- District Boundary



© Crown copyright. All rights reserved. Wakefield Council No. LA 10018274-2008



# WEST YORKSHIRE - URBAN/RURAL SPLIT WAKEFIELD DISTRICT

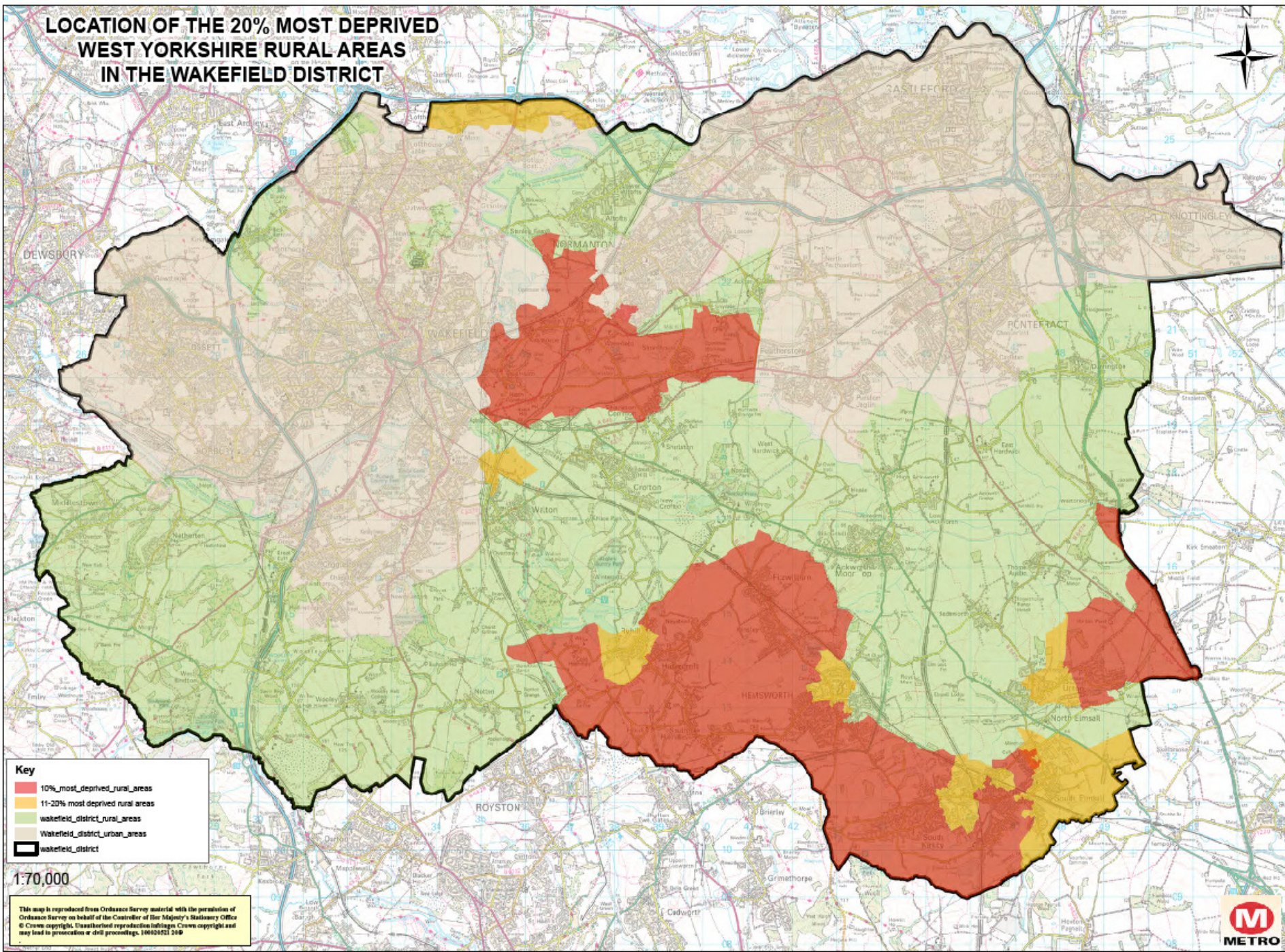


This map is reproduced from Ordnance Survey data with the permission of Ordnance Survey on behalf of the Controller of Her Majesty's Stationery Office. © Crown copyright. Ordnance Survey is a registered trademark. All rights reserved. Ordnance Survey may not be reproduced or transmitted in any form or by any means, electronic or mechanical, including photocopying, recording, or by any information storage or retrieval system, without the prior written permission of Ordnance Survey. 2010/2011/2016.

1:100,000



# LOCATION OF THE 20% MOST DEPRIVED WEST YORKSHIRE RURAL AREAS IN THE WAKEFIELD DISTRICT



**Key**

- 10% most deprived rural areas
- 11-20% most deprived rural areas
- wakefield\_district\_rural\_areas
- Wakefield\_district\_urban\_areas
- wakefield\_district

1:70,000

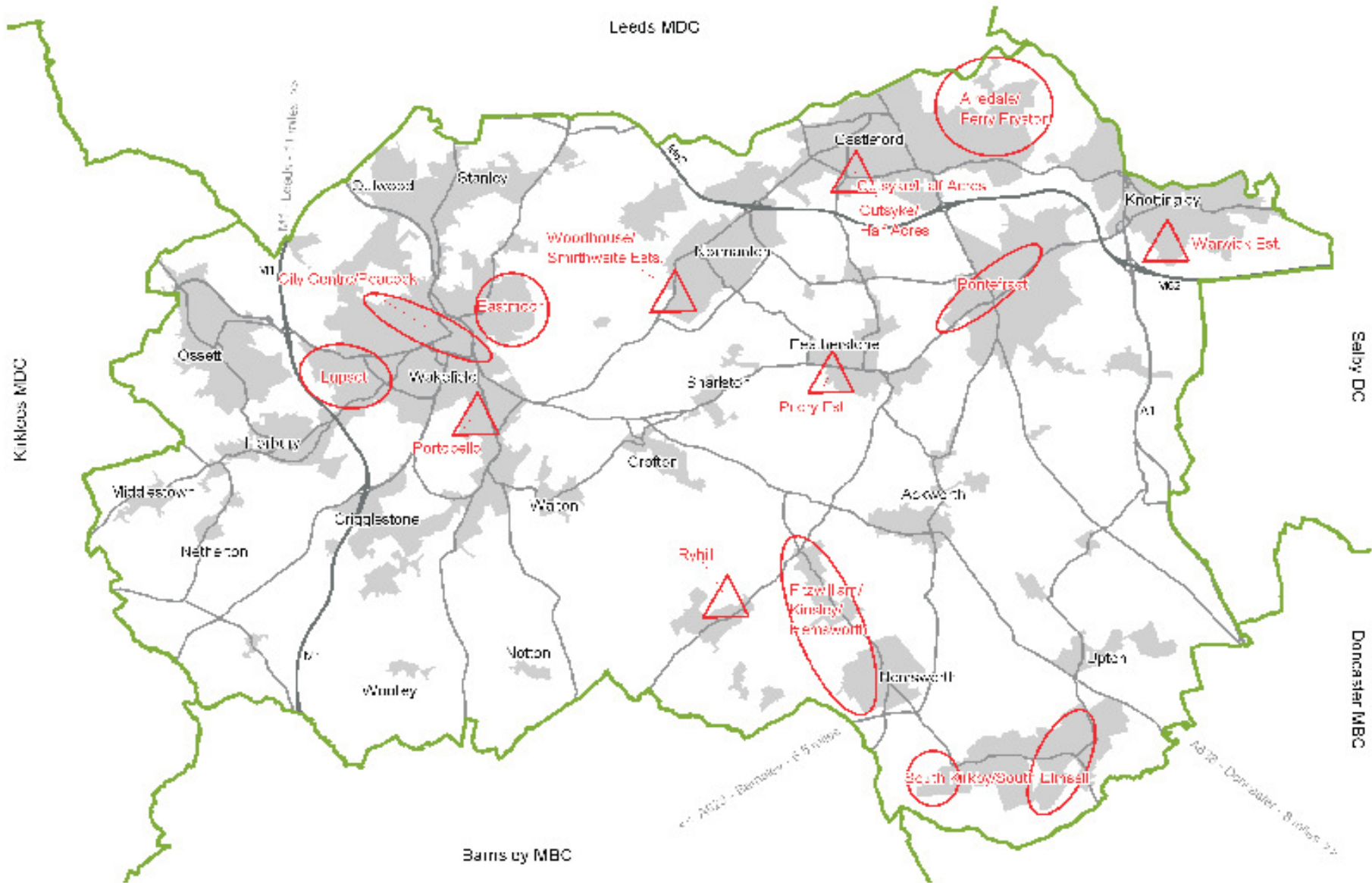
This map is reproduced from Ordnance Survey material with the permission of Ordnance Survey on behalf of the Controller of Her Majesty's Stationary Office  
 © Crown copyright. Unauthorised reproduction infringes Crown copyright and may lead to prosecution or civil proceedings. 10002521 2009



# People and Communities

- Work and Skills Plan for the district being developed as part of Future Jobs Fund
- Worklessness assessment backed up by CLES Worklessness Toolkit
- Local plan based on Economic Regeneration Strategy and Geographic Programme
- Leeds City Region Work and Skills Plan being developed by April 2010

# Worklessness in Wakefield District - The 28 LSOA's with an adult claim rate of more than 25%



Crown Copyright. All rights reserved. WMDC Licence No 10019574 2008



# Business and Enterprise

- Structure of local economy, enterprise and innovation, work with LCR, Colleges. University links an issue, more grade A office space will help diversify into a more knowledge based economy.
- Business needs are a major gap in knowledge. Survey of industrial estates and business parks, working on overall business survey with Yorkshire Forward. Need to establish how far regulatory services support local business.

# Sustainable Economic Growth

- Natural and historic environment; LDF, Greenspace, Woodland Strategy, LTP, work on Townscape Heritage initiatives. LDF waste development plan identifies waste stream by sector but other gaps in environment analysis
- Transport and infrastructure, bring LTP and Economic Regeneration Strategy together. Infrastructure study for LDF will be useful. Green infrastructure study under way.

# Economic Competitiveness

- Draw on Economic Resilience study by Ekosgen for Yorkshire Cities, Northern Way City Relationships study, Centre for Cities Report – Cities Outlook 2010, Regenerating the Edge Towns – M62/M1 intersection Area, Issues and Opportunities. IPPR study.
- Wakefield's contribution to the Leeds City Region, build on existing strengths and match employment land to housing growth.

# Activities so far

- Project Group in Wakefield Council chaired by Strategic Housing and Economic Development Director
- Theme groups around;
  - Infrastructure, LDF, PPS4 and Housing
  - Business and enterprise
  - People and Communities e.g. work and skills plan and worklessness assessment
  - Others as required

# Leeds City Region

- Successful RIEP bid to support Economic Assessment capacity in LCR
- Initial evidence sift by consultants for LCR Assessment
- Appointment soon of Economic Assessment Co-ordinator to liaise with 10 economic assessment lead officers and ensure consistent approach e.g. to business survey so data can be compared and aggregated

# Local Challenges

## Rural Strategy - Actions

- Staff Resources
- Effective participation of all Council service areas
- Financial Resources – not sure if we can use all or part of the £65k allocation
- Engagement and feedback from business, success of survey
- Other partners involvement through Partnership Information Group
- Ensuring LEA is strategy driven and not data driven

# Value of LEA

- Economic Assessment will help align strategies within the Council and Partnership
- Feed in to revised Economic Regeneration Strategy and Geographic Programme as well as Community Strategy and Corporate Plan
- Raise the profile of economic development and regeneration – statutory duty is helpful
- Encouraging investment in the district and the City Region and defining roles of districts in the LCR