

Local Economic Assessment

Marc Bould

Regeneration Projects Officer



INVESTOR IN PEOPLE

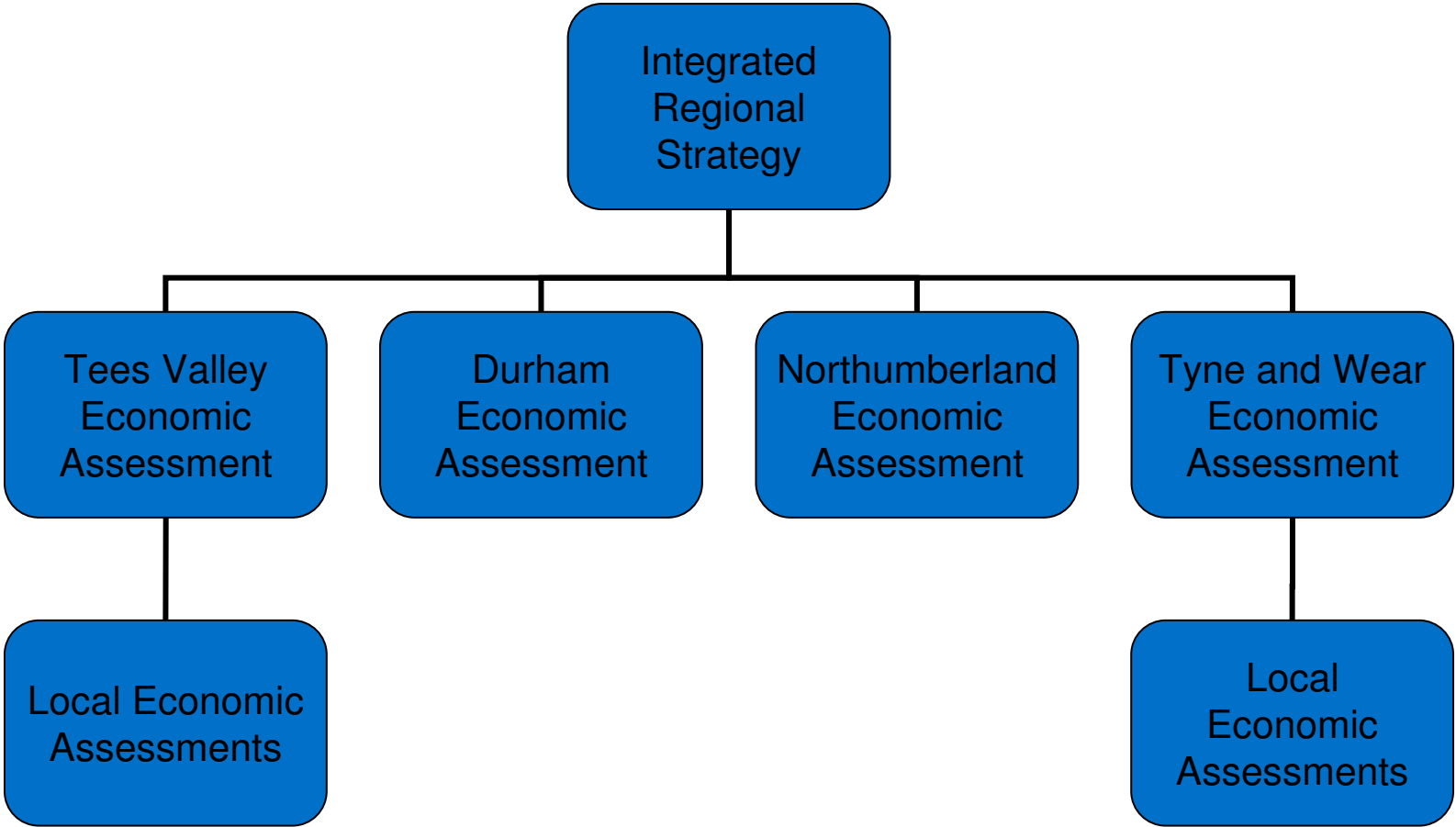


2003-2004
Rethinking Construction
2004-2005
Crime and Disorder Partnerships

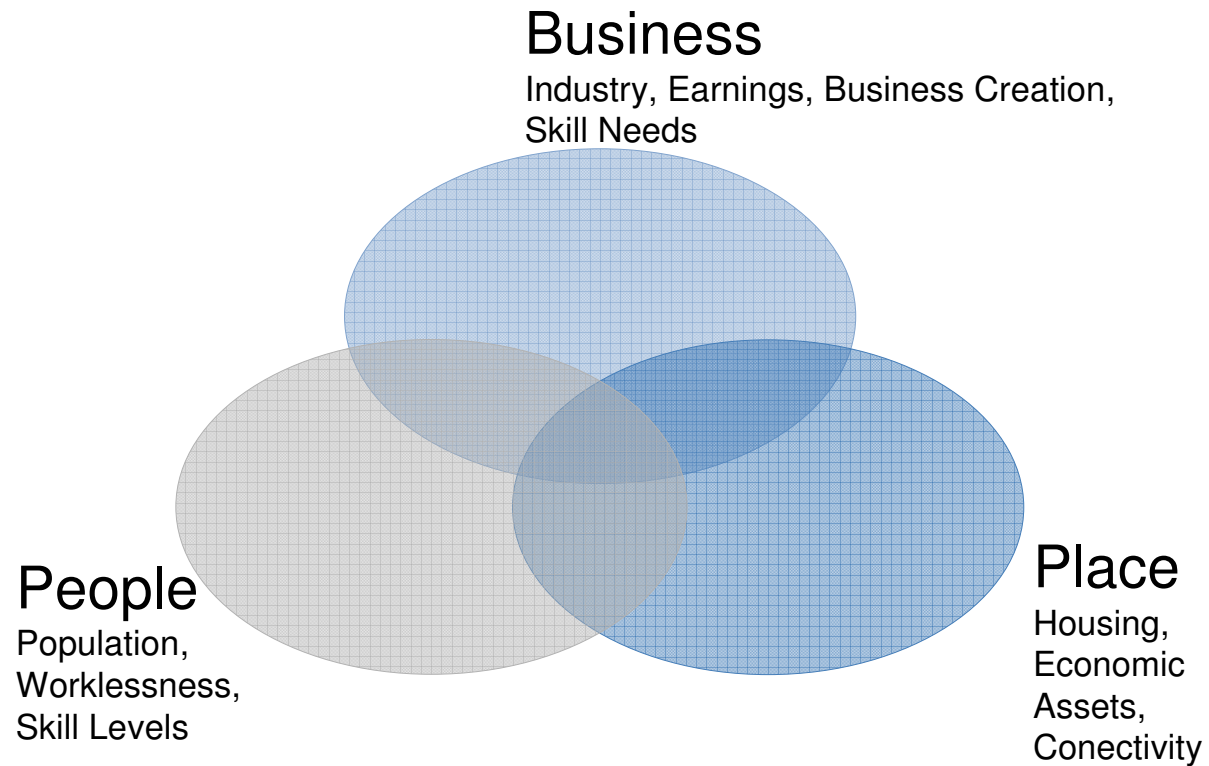
Contents

- Geographic Scope
- Core Evidence
- Consultation and Engagement
- Diagnostic Study
- SWOT Analysis
- Scenario Planning
- Challenges and Best Practice

Geographic Scope



Core Evidence



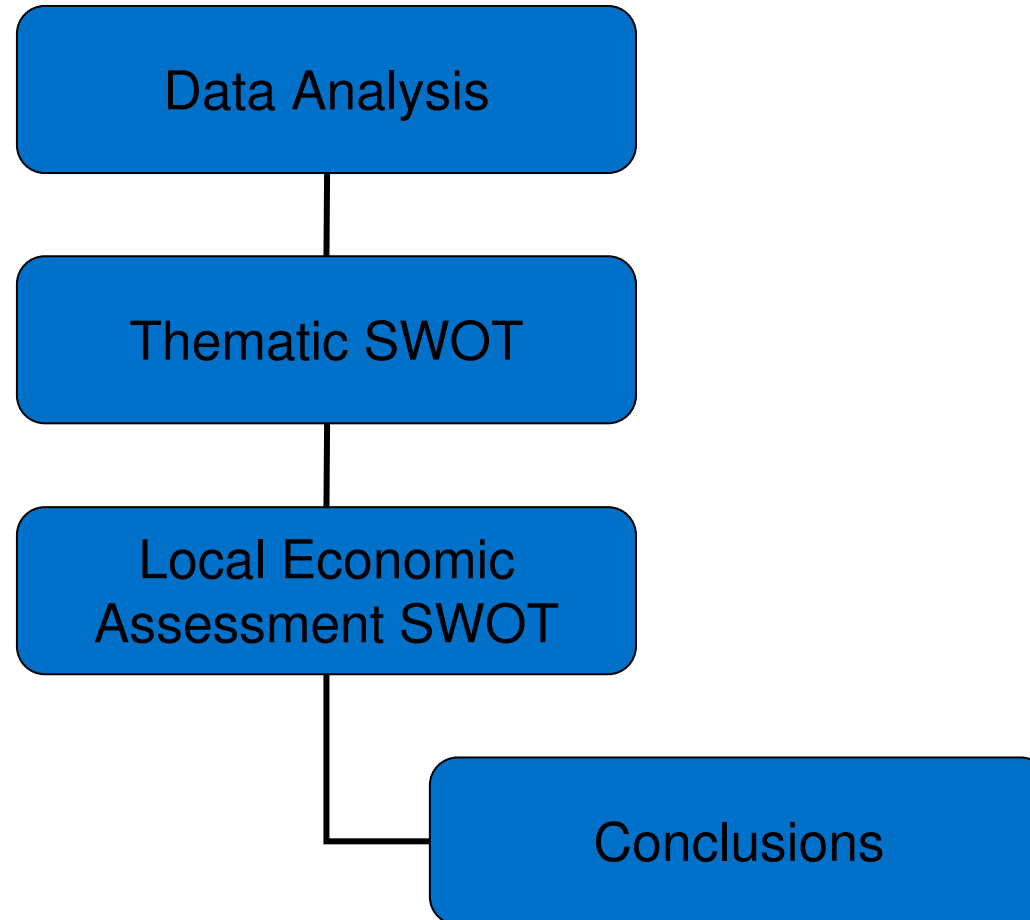
Consultation and Engagement

- Public Sector
 - Council Members
 - Strategic Partners
 - Mandatory Consultees
- Private Sector
 - Local Business and Developers
 - Business Networks and Representative Groups
- Third Sector
 - Umbrella Organisations
 - Community Groups and Social Enterprise

Diagnostic Study

- Link between strategy and data
- Existing targets and projections
- Current direction of travel
- Gaps in information and knowledge

SWOT Analysis



Scenario Planning

Economic Shocks or New Investment

- Shrinking Public Sector
- Low Growth
- High Unemployment
- New Industry
- High Energy Cost
- Property Market Crash

Challenges and Best Practice

Challenges

- New piece of work
- Linking data to strategy
- Setting the scope for information to be used
- Impact of the recession

Best Practice

- Work with sub regional partners
- Use of existing data
- Dedicated core team