



Northumberland
Strategic Partnership

NORTHUMBERLAND

Northumberland County Council

Developing a Local Enterprise Partnership – our story so far

Friday 10th September 2010, CLES Event
Rob Strettle, Regeneration Policy Manager

Contents

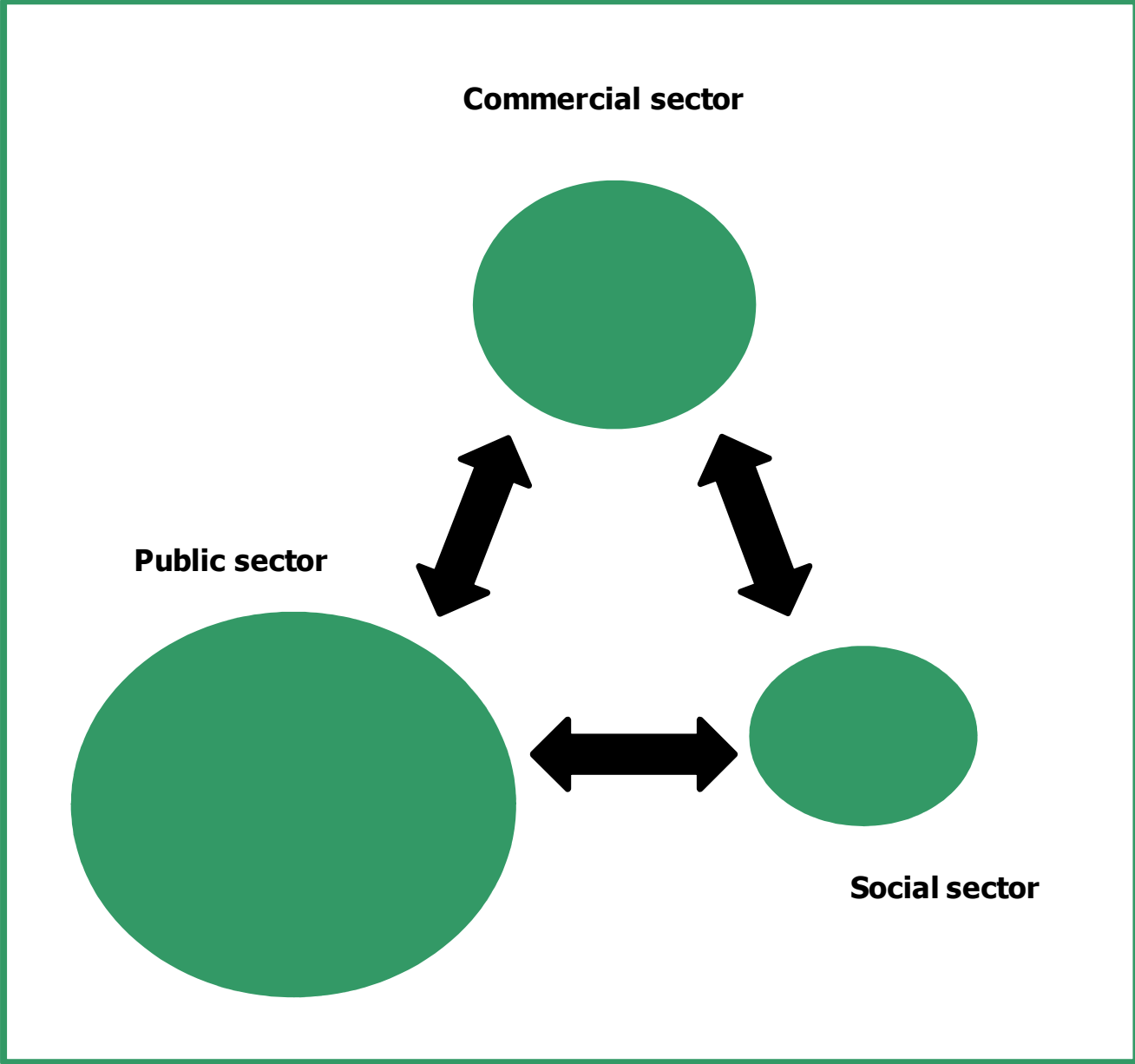
- **LEP Proposal Development**
- **What we want to achieve**
- **What next – Key Issues and Risks**



North Tyneside and Northumberland
Local Enterprise Partnership Proposal

6 September 2010

Relative influence of sectors in the Northumberland economy



Source: CLES

Events to date

- **North East support function** agreed but detail to be discussed
- **Political discussion** – key driver
- **Issues and options** – considered Spatial, Governance, Strategic, Resource issues informed by ongoing policy ‘breaking news’
- **Business engagement** – building on a range networks and contacts
- **Preferred Proposal Development** – practical, delivery focused option favoured with North Tyneside.



North Tyneside Council

Resilient but Vulnerable?

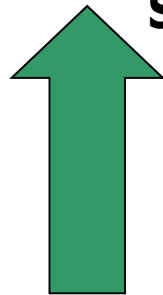
Relationships, Strategy and Assets demonstrate resilience
but huge vulnerability and risks that progress may be lost

Northumberland's Place on the CLES Resilience Scale



Resilient

Strategic approach and relationships assessment



Stable



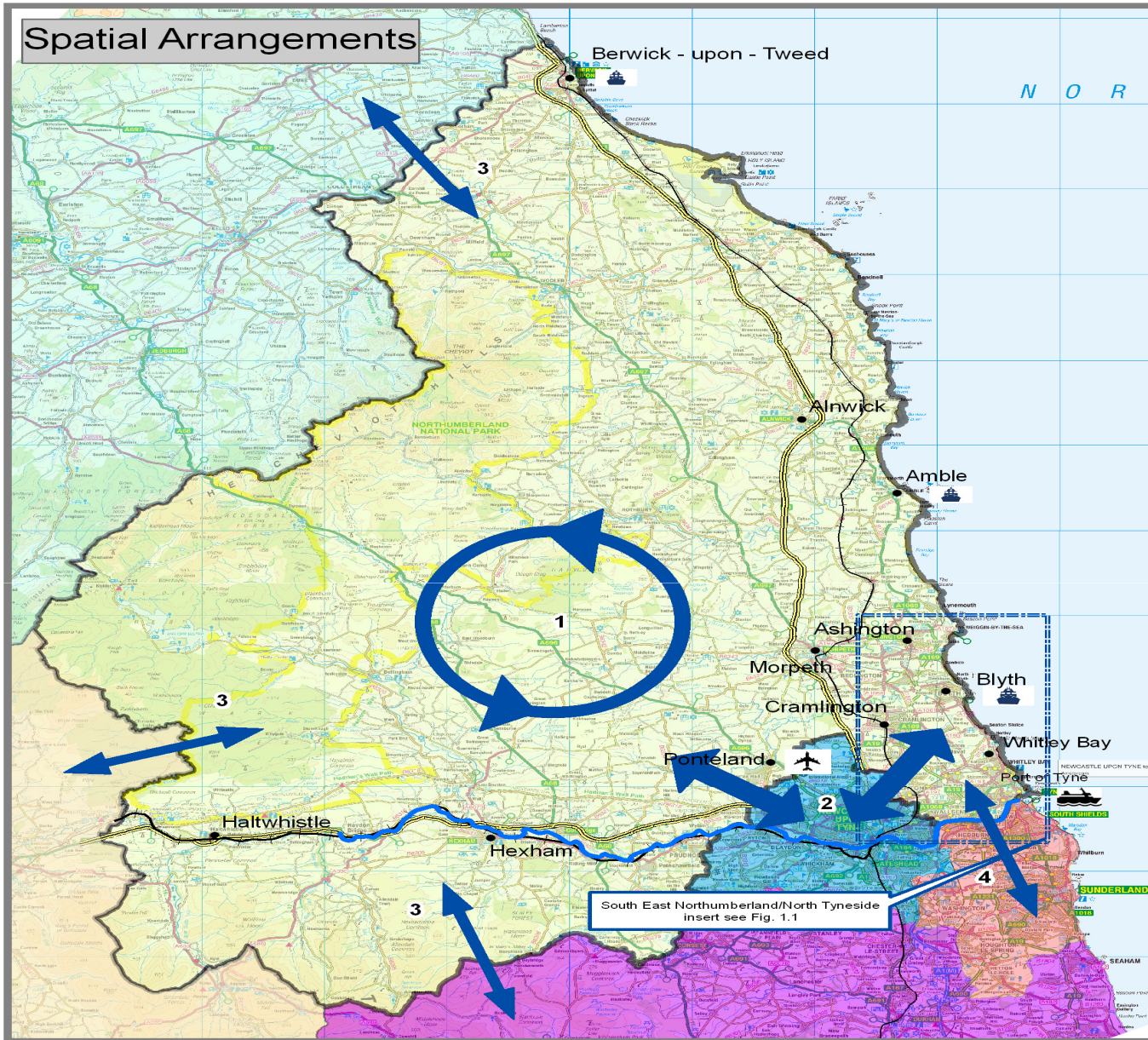
Vulnerable

Partners Assessment

Brittle

Source: CLES

Spatial Arrangements



- Northumberland & North Tyneside
- Newcastle & Gateshead
- South Tyneside/Sunderland
- Durham
- Cumbria
- Scottish Borders

- River_Tyne
- Rail links
- Road links
- ⚓ Ferry port
- ⚓ Sea port
- ✈ Airport

Spatial Area	Local Authority Area
1 Northumberland / North Tyneside	Northumberland / North Tyneside
2 Newcastle / Gateshead	Newcastle / Gateshead
3 Rural Networks	Scottish Borders / County Durham / Cumbria
4 South Tyneside / Sunderland	South Tyneside / Sunderland



Northumberland County Council
 © Crown Copyright
 All Rights Reserved
 OS Licence No. 100049048, 2009



Business Engagement



Business Engagement

- **Wide** - broad and strategic (150 directly engaged)
- **Leader to leader** - including strategic partners
- **Representative** of the structure of the economy private, social and public sector *business*
- Based on **existing relationships**
- **Secured input** to shape principles, priorities and spatial arrangements via event and open feedback process
- Asked for **Letters of Support**

Business Engagement

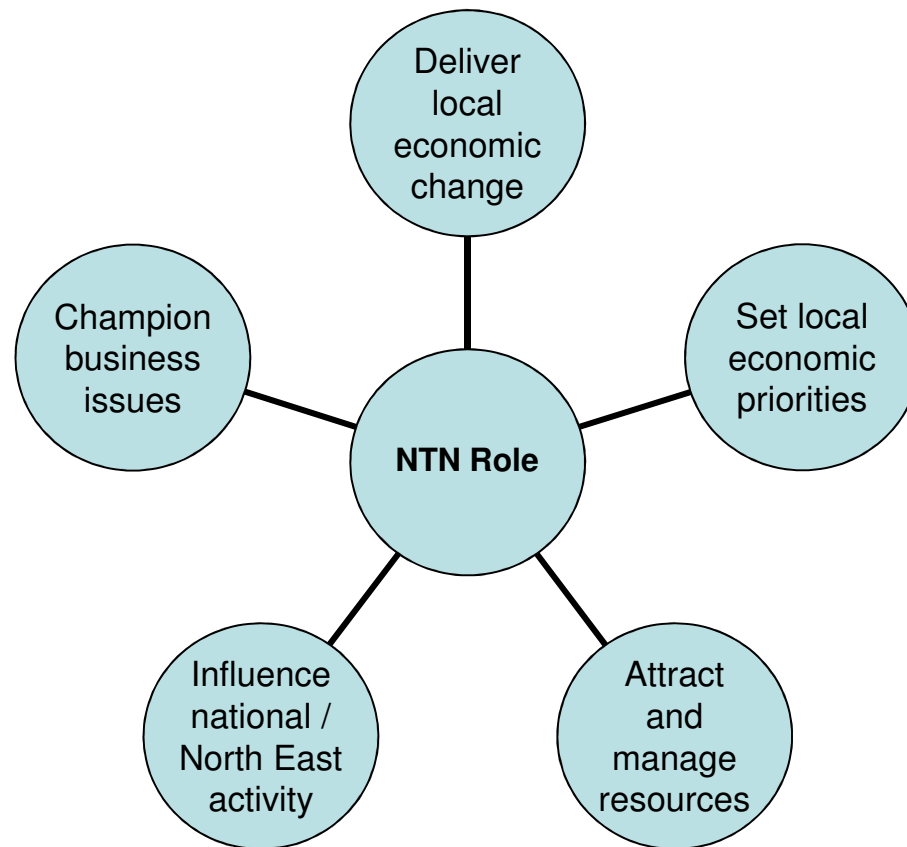
Diverse views but common themes:

- Keen on work across boundaries but don't want to lose locality issues and influence
- Concerns over delivery and critical mass to compete
- Concerned that all sector and size of business should have a voice
- Keen to see progress and pace in the arrangements

Asks for future engagement

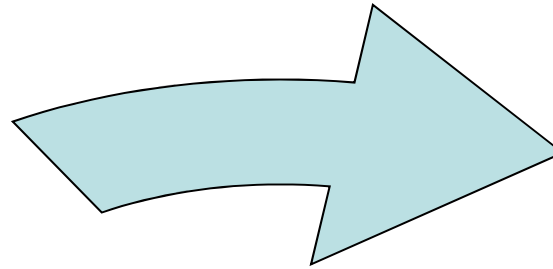
- Engage us earlier in the process
- focused, sharp and timely communication,
- more breakfast meetings including networking
- leader to leader, specific issue solutions, public sector facilitation

LEP Role

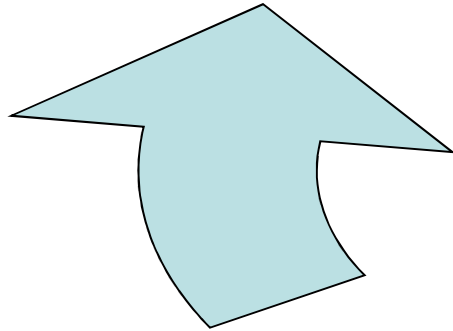


What we want to achieve

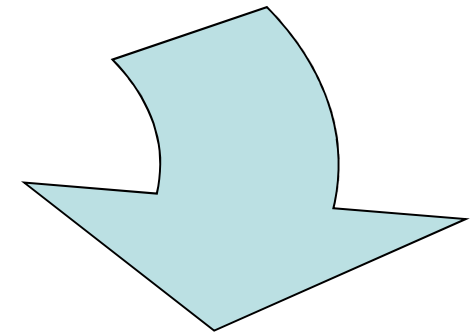
**Create the Conditions
for Sustainable Growth**



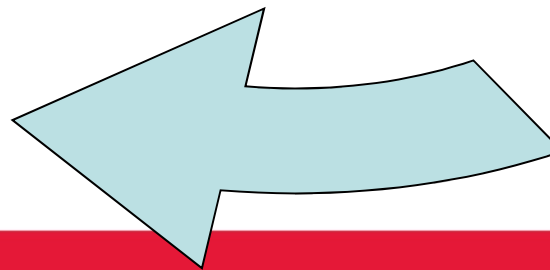
**Support Resilient
and Diverse
Sectors**



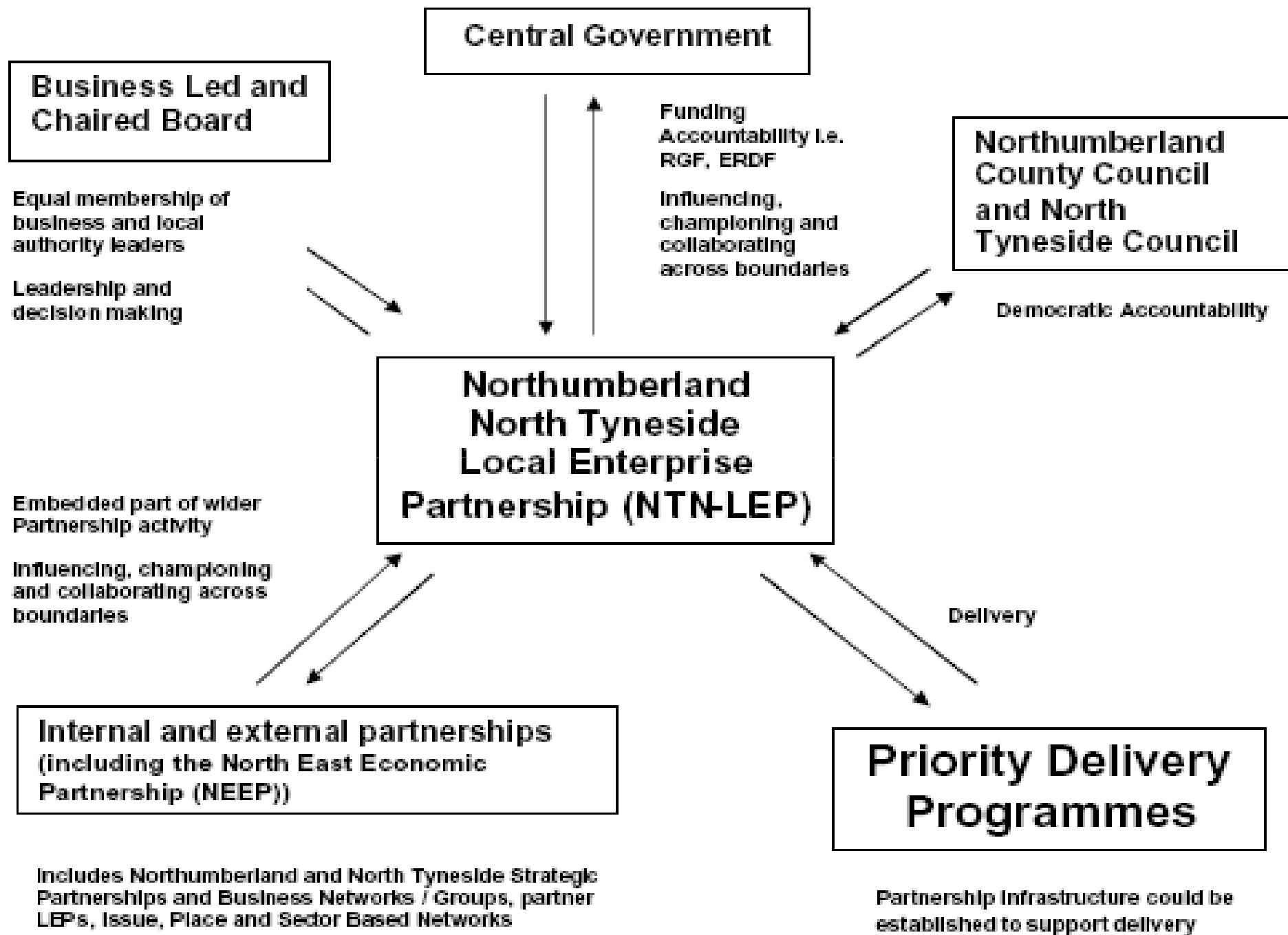
**‘To secure opportunities for
residents and businesses in a
resilient and robust economy’**



**Enable Inclusion
and Enterprise**



**Become a Low
Carbon Economy**



What Next? – Key Issues and Risks

<p>Government's view</p> <ul style="list-style-type: none">- spatial arrangements- economic scale- Potential of North East economic function- may prompt new developments	<p>Business Led</p> <ul style="list-style-type: none">- Governance, accountability, power and responsibilities- transition from current partnerships- maintaining business interest- build new relationships- demonstrate LEPs make a difference and aren't just 'moving the deck chairs'
<p>Operating Model</p> <ul style="list-style-type: none">- Capacity to enable initial and long term development- In context of wider efficiencies- Voluntary partnership to company options being considered- cross boundary collaboration a given	<p>Funding and Resources to deliver</p> <ul style="list-style-type: none">- Regional Growth Fund and spending review detail- Re-shaping the public sector, multiplier effect risk of deficit reduction- place based, sector interventions- hard decisions may impact social equity

Further Information

- LEP Proposal
- Regional Growth Fund Response
- North East Economic Partnership Proposal
- Northumberland Economic Strategy, Assessment and CLES Pilot

Go to www.northumberland.gov.uk/default.aspx?page=5712